

Smart Robot V 1.5





User Manual

"Smart Robot" EA Disclaimer

All the information of the "Smart Robot" EA is for you only, and by purchasing the given product you agree to keep this information private, confidential, and protected from any disclosure.

Trading any financial market involves risk. The content of this e-book, its various associated websites, and all related correspondence, are neither a solicitation nor an offer to purchase or sell any financial instrument.

Although every attempt has been made to ensure accuracy, we do not give any express or implied warranty as to its accuracy. We do not accept any liability for error or omission. Examples are provided for illustrative and educational purposes only and should not be construed as investment advice or strategy.

No representation is being made that any account or trader will or is likely to achieve profits or losses similar to those discussed in this e-book. Past performance is not indicative of future results.

There are numerous factors related to the market in general and to the implementation of any specific trading program which cannot be fully accounted for in the future of performance results, all of which can adversely affect actual trading results.

We reserve the right to change these terms and conditions without notice.

The content of this e-book and all related websites and correspondence are copyright and may not be copied or reproduced.

By purchasing the software, or using the website, you will be deemed to have accepted these terms in full.



Risk Warnings

Risk Disclosure: Trading foreign exchange on margin carries a high level of risk and is not suitable for all investors. The high degree of leverage can work against you. As with all investments, you should not invest money that you cannot afford to lose. Before deciding to invest in foreign exchange, you must carefully consider your investment objectives, level of experience, and risk appetite additionally, you must be aware of all the risks associated with foreign exchange trading and seek advice from an independent financial advisor. Past results are not necessarily indicative of future success. Your actual trading may result in losses as no trading system is guaranteed. You accept full responsibilities for your actions, trades, profit or loss.

Don't trade money you can't afford to lose.

The past performance of any trading system methodology is not necessarily indicative of future results.



Introduction

Smart robot use moving average to place extremely accurate orders and use Martingale in case to orders against you.

Meta Trader 4 must be open 24 hours a day, 5 days a week to run properly. (We suggest that you use a Virtual Private Server (VPS) if you don't have a very good computer or internet connection.)

You can use a VPS to host the software if you do not want to or cannot leave your computer on.

The Smart robot can run on all Time-frames and on all Currency.

Is compatible with all brokers and ECN.

The experts work best with 1:400 leverage and above. Tight spreads and low latency.



Account Size Recommendations

You generally want about \$10,000 Equity per currency pair where 0.1 lots = \$1.00 at 1:500 leverage.

So that would be like \$900 cent account at [Instaforex](#) where it's \$90,000 cents which gives enough room for 9 charts to run (all majors).

This setup is usually good for about 0.25% gain per day or 5%-6% per month.

You can deviate from this setup either way if you want a higher daily gain with more risk, or a lower daily gain for an even safer setup.

We always recommend starting at as low a risk as possible and slowly increasing it week to week until you get a comfortable setup for your own personal preference.

We recommend use [Instaforex](#) for our live cent accounts. We generally use \$1500 - \$2000 trading 0.1 lots with 1:1000 leverage. Trading 9 pairs this is generally good for about 0.25% per day which would be a conservative setup.

For lowest possible risk you can use a combination of USDCAD, EURCHF and GBPUSD. Just because we have optimized settings for 9 major pairs doesn't mean you have to run them all.

Don't forget to take your profit at least one a month.

Instaforex Broker Recommendations

We recommend use flexible broker [Instaforex](#) because it offers both regular and cents accounts with min deposits of just \$1 and leverage up to 1:1000.

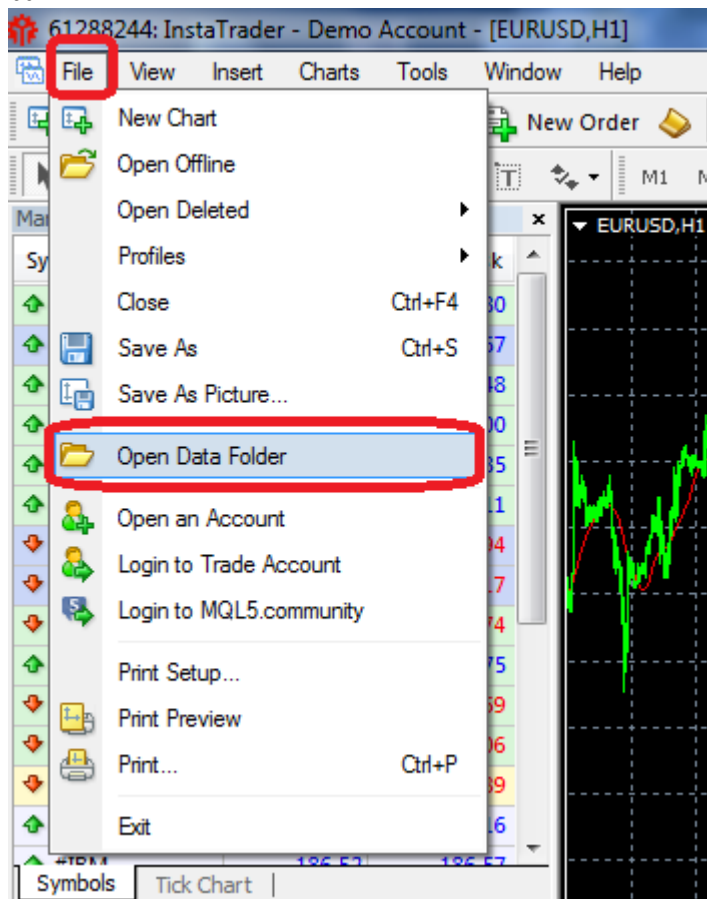
[Instaforex](#) also has a 30%-55% deposit bonus.

Account Types:

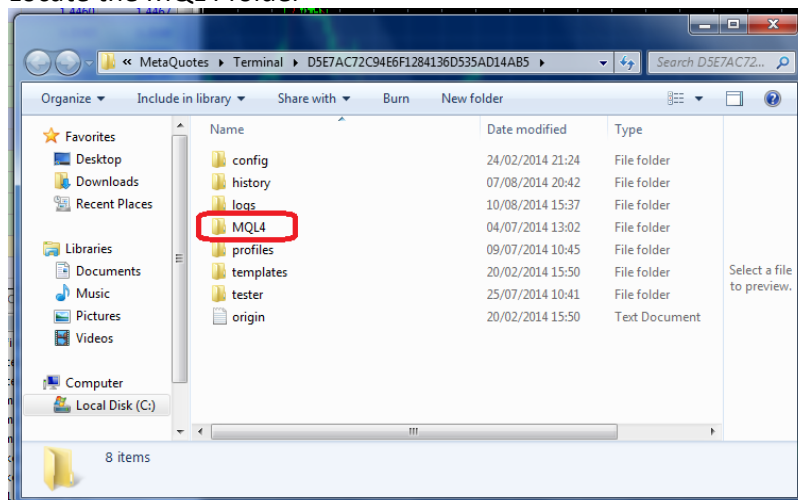
Options	Account type			
	Insta.Standard	Insta.Eurica	Cent.Standard	Cent.Eurica
Deposit currency	EUR, USD	EUR, USD	USD Cents, EUR Cents	USD Cents, EUR Cents
Minimum deposit	1 USD	1 USD	1 USD	1 USD
Maximum deposit	unlimited	unlimited	1000 USD	1000 USD
Spreads	3-7	0	3-7	0
Fee	0	0.03%-0.07%	0	0.03%-0.07%
Minimal deal	0.01 of the lot	0.01 of the lot	0.10 of the lot (equivalent of 0.0001 market lot)	0.10 of the lot (equivalent of 0.0001 market lot)
Maximal deal	10000 lots	10000 lots	10000 lots	10000 lots
Leverage	1:1-1:1000	1:1-1:1000	1:1-1:1000	1:1-1:1000
Margin for locks	25%	25%	25%	25%
Margin Call	30%	30%	30%	30%
Stop Out	10%	10%	10%	10%
Interest rate	5%	5%	5%	5%

Installation

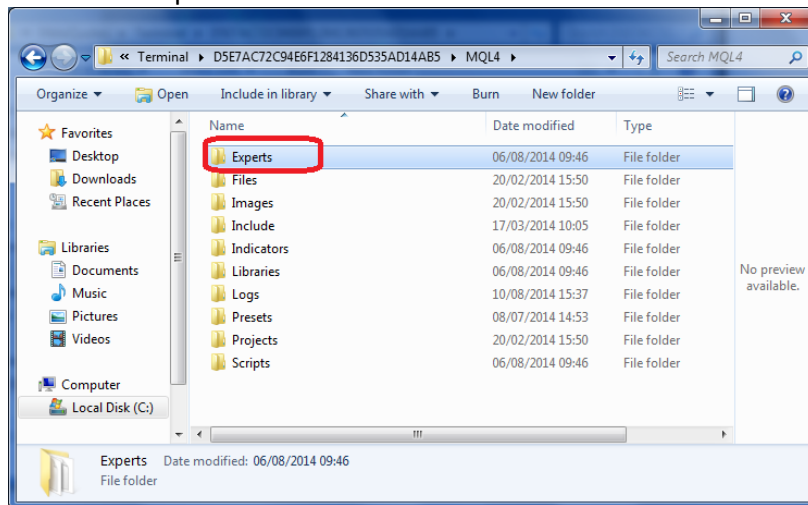
1. First we need you to install Smart Robot into the appropriate folders on your computer or VPS, open up your MT4.
2. Go to the MQL4 folder by selecting "File" and then "Open Data Folder" from the task bar.



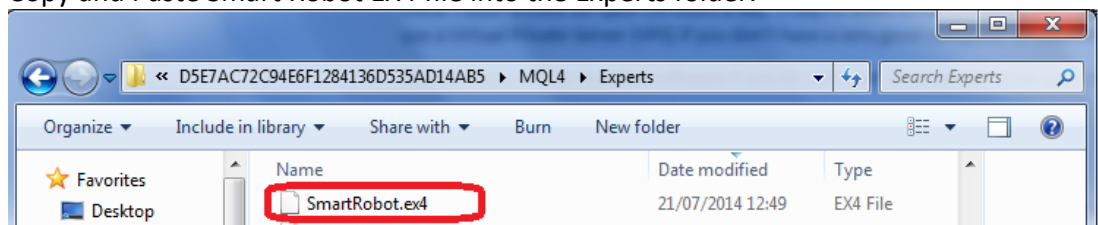
3. Locate the MQL4 folder



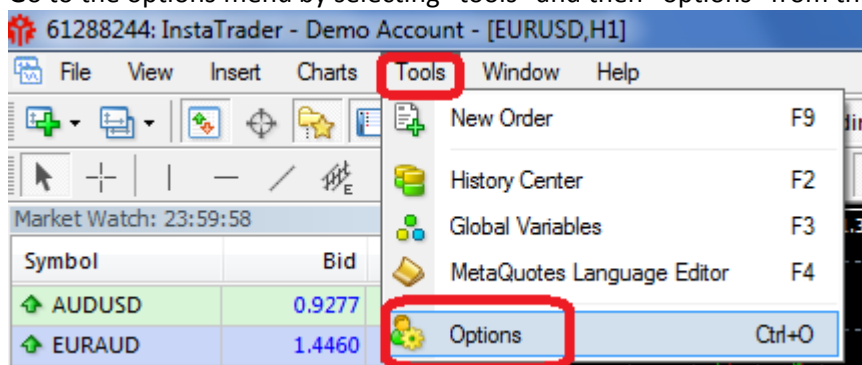
4. Locate the Experts folder



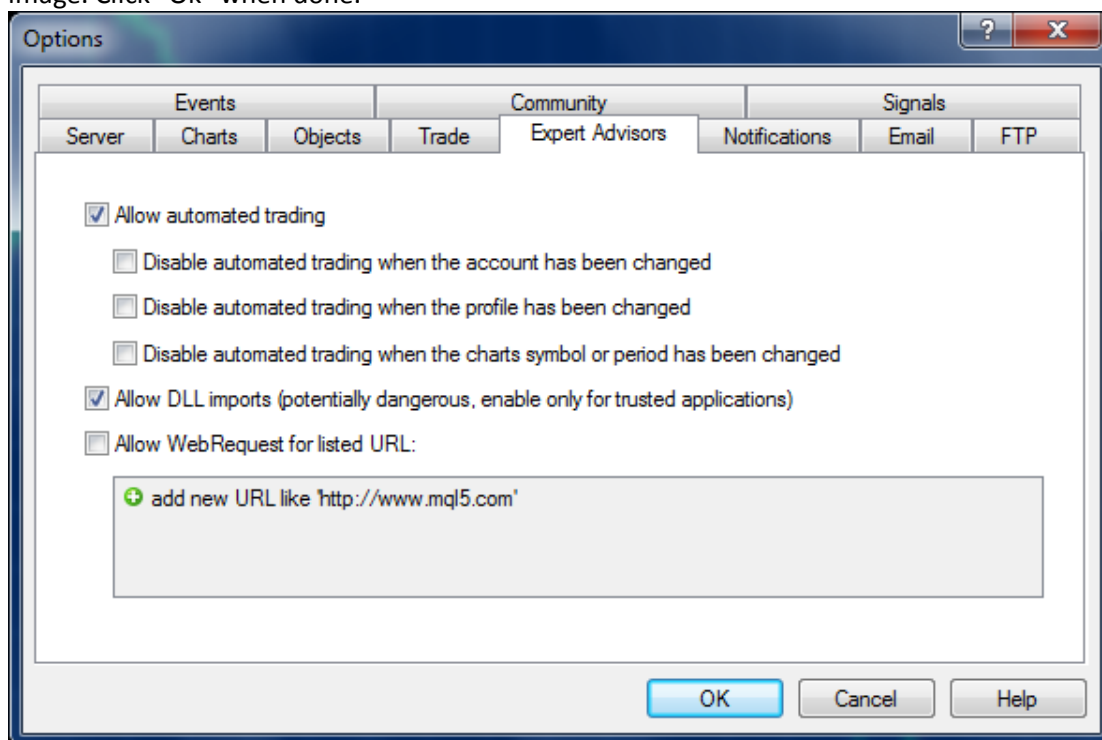
5. Copy and Paste Smart Robot EX4 file into the Experts folder.



6. Go to the options menu by selecting "tools" and then "options" from the task bar.

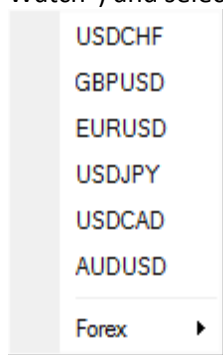


7. Select the Expert Advisors tab, and make sure your settings match the following image. Click "OK" when done.



8. Open a new chart under "file" "new chart" and select the pair type that you would like to attach Smart robot to.

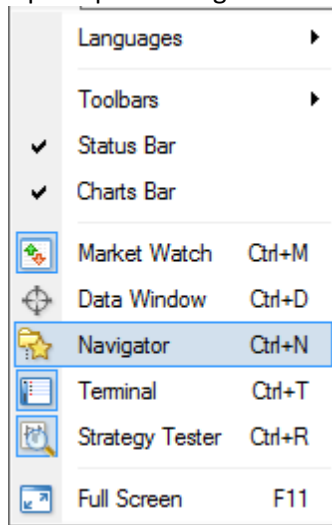
*You may have to right click on the Market Watch window (Under "View" "Market Watch") and select "Show All" to find the pair you are looking for.



9. Make sure the chart is set to the correct timeframe you are running. Look for the bar below in MT4 to change the timeframe.



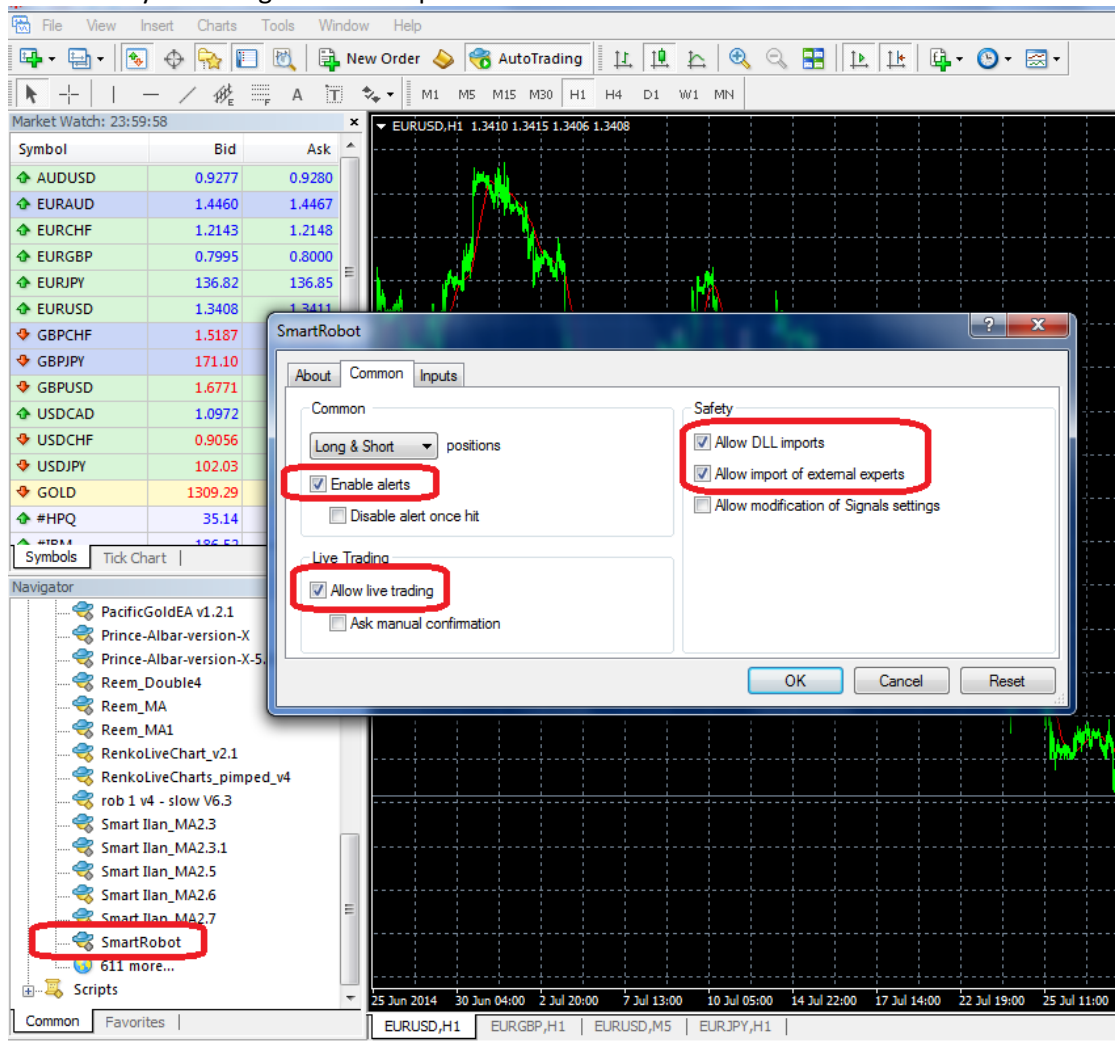
10. Open up the navigator Window by going to “View” and then “Navigator”



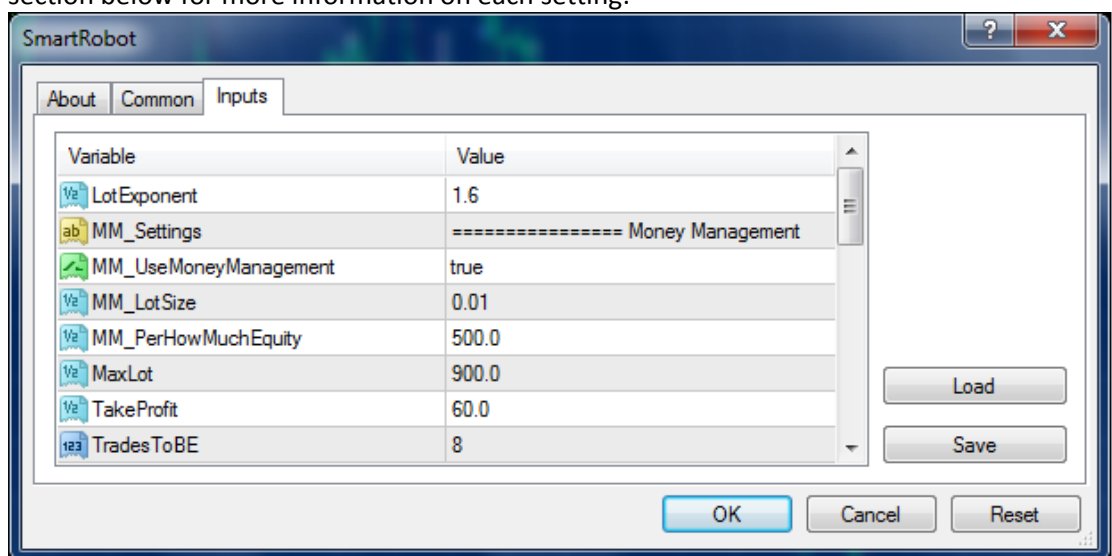
11. Restart your MT4 broker account, and login if necessary. Make sure your navigator tab is open and select the Experts folder.



12. In the navigator window, Click and Drag the Smart Robot onto the desired chart and Make sure you settings match the picture below.



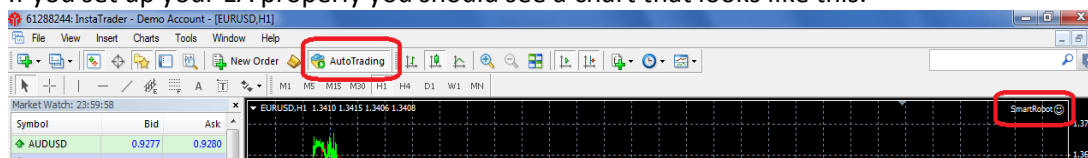
13. Select the Inputs tab and enter your desired settings. See the Smart Robot Settings section below for more information on each setting.



14. Click ok when done.



15. If you set up your EA properly you should see a chart that looks like this.



*If you do not see a smiley face in the top right corner please go back and double check your

Setting Parameters

LotExponent - Used to multiply the lot size of progressive trades against a movement until the price retraces the Take profit amount.

MM_UseMoneyManagement –FALSE don't use MM, True use MM (2 parameters below).

MM_LotSize – Starting lot size. This is the smallest trade size that will be opened, and the sizes will be incremented from there by the LotExponent. So remember to start as low as possible. Either 0.01 or 0.1 depending on what your broker/account type allows.

MM_PerHowMuchEquity – use MM_LotSize against every Equity that display here.

For example:

MM_UseMoneyManagement = True

MM_LotSize = 0.01

MM_PerHowMuchEquity = 1000

Balance	Start Lot
1000	0.01
3000	0.03
4500	0.04
5000	0.05

MaxLot – Maximum Lot to use.

TakeProfit - The amount of pips to close a basket of trades at. (4 digits account 1 is one pips, 5 digits account 10 is one pips).

TradesToBE – Number of trade that TakeProfitToBE will be use.

TakeProfitToBE – Take Profit in case of basket >= TradesToBE. (4 digits account 1 is one pips, 5 digits account 10 is one pips).

Pipstep – This is the amount of Pips for the price to move against an open trade before the EA will open another against the movement with a multiplied lot size. Just like the TP above, make sure to do some testing if you decide to change this value. (4 digits account 1 is one pips, 5 digits account 10 is one pips).



PipStepExponent – Used to multiply the Pipstep of progressive trades against a movement until the price retraces the Take profit amount.

Slip – Max Slippage user defined. Depends on broker. 2 is normal but you can increase. (4 digits account 1 is one pips, 5 digits account 10 is one pips)

MaxTrades – Maximum number of trades in a basket that this strategy will open.

MagicNumber – Unique magic number to identify trades for strategy.

StopNewSequences – True, Close this basket regular and don't open new basket.

MA_TF – Time frame for Moving Average.

ID	Value	Description
PERIOD_CURRENT	0	Current timeframe
PERIOD_M1	1	1 minute
PERIOD_M2	2	2 minutes
PERIOD_M3	3	3 minutes
PERIOD_M4	4	4 minutes
PERIOD_M5	5	5 minutes
PERIOD_M6	6	6 minutes
PERIOD_M10	10	10 minutes
PERIOD_M12	12	12 minutes
PERIOD_M15	15	15 minutes
PERIOD_M20	20	20 minutes
PERIOD_M30	30	30 minutes
PERIOD_H1	60	1 hour
PERIOD_H2	120	2 hours
PERIOD_H3	180	3 hours
PERIOD_H4	240	4 hours
PERIOD_H6	360	6 hours
PERIOD_H8	480	8 hours



PERIOD_H12	720	12 hours
------------	-----	----------

MaPeriod – Averaging period for calculation Moving Average.

MaMode – Moving Average method

ID	Value	Description
MODE_SMA	0	Simple averaging
MODE_EMA	1	Exponential averaging
MODE_SMMA	2	Smoothed averaging
MODE_LWMA	3	Linear-weighted averaging

Smart – True: open new trade directly after close basket. False: wait until close bar.

SameLotForSecond – True: second trade will be same lot like the first one. False: use LotExponent like all other trades in the basket.

Stoploss – We recommend leaving this higher so the EA has room to breathe and a chance to open enough trades in a strong trend. Setting this too low could result in very poor performance. If you set this lower, then if your drawdown in open trades ever reaches 50%, ALL open trades at that time will automatically be closed. (4 digits account 1 is one pips, 5 digits account 10 is one pips)

UseEquityStop – True: Check if drawdown >= TotalEquityRisk, False: don't check drawdown.

UseEquityForNewSeq – True: Check if drawdown >= TotalEquityRisk, if yes don't open new basket until drawdown will be less TotalEquityRisk False: don't check drawdown.

TotalEquityRisk – in case of UseEquityStop = True, We recommend leaving this 50% or higher so the EA has room to breathe and a chance to open enough trades in a strong trend. Setting this too low could result in very poor performance. This is a percentage (%) based stoploss. If you set this to say 50, then if your drawdown in open trades ever reaches 50%, ALL open trades at that time will automatically be closed.
In case of UseEquityForNewSeq = True, new basket in other pairs will not open.

UseTrailingStop – TRUE if you want to active this feature otherwise leave it false. This is used to protect profits according to PrecentForTrailStart.



PercentForTrailStart – At how many Percent in profit do you want to start protecting the basket in case of a reversal?

* Be aware that for 4 digits account 1 is one pips and for 5 digits account 10 is one pips.



FAQ

Q: Do I have to trade myself? Is it difficult to setup?

A: No! All you need to do is small setup and Smart Robot trade on your account to bring you profit! You will get step-by-step instructions on how to setup and run them.

Q: What platform is Smart Robot working on?

A: Smart Robot is developed for the MetaTrader4 platform only. The world's most competent brokers use this trading platform. It is extremely user friendly.

Q: Can Smart Robot work when I am away or gone out?

A: Yes, Smart Robot work 24 hours a day for you. It is not necessary for you to monitor every time on your trades. Our Smart Robot will monitor the trades, open orders and close positions for you when needed. Just stay tune and your money will grow.

Q: Can I use several EA on the same account?

A: Yes, sure. However please understand the trade behavior of each EA and set the right risk level. The most important thing is set a different set of "Magic Number" which is the differentiator of every different trade. Under no Circumstances that putting same magic number in the same MT4 platform.

Q: How come my MT4 is keeping on log in and out?

A: This means that you do not have a stable broadband connection in your area. Trading is about consistencies and you will not allow for down time. Hence you may consider purchasing a Virtual Machine (VM) Server or Virtual Private Server (VPS) as a solution.